



# User Manual

## Mandala Astral Star



Please read the manual before using the tools.

Version 4.4

Updated 5<sup>th</sup> December 2025

## **1. General Notes**

### **1.1 Product Feature and Intend Use**

Mandala Astral Star is a cutting-edge, portable wellness device designed to harmonize your body's energy and enhance emotional clarity. It utilizes advanced laser light technology, magnetic fields, and scalar waves to promote deep relaxation and energetic balance.

With its high-frequency laser emissions and scalar wave field technology, Astral Star stimulates your biofield, supporting overall well-being.

Pair it with the Astral Star app, which lets you explore a range of symbolic programs for targeted energetic support. For a deeper experience, integrate Mandala Scan to analyze your energy field and discover the most aligned symbols for optimal coherence.

Your Mandala Astral Star has been precision-tested for quality and is ready to elevate your energy, anytime, anywhere.

### **1.2 Product details**

- Laser frequency adjustment and symbol drawing equipment for therapy
- Use electronic control circuits
- Output uses Red Laser, Green Laser, Blue Laser and PCB Scalar Coil
- Supports Bluetooth for mobile control

### **1.3 Safety Warnings**

- Check all accessories upon unboxing.
- Read and follow all safety instructions in the manual.
- Do not turn the device on by looking directly at the device because it contains lasers.
- Do not turn on near water or in wet areas.
- Do not take apart if you are not a professional technician.
- Avoid placing near heat sources such as stoves.
- Use only the power supply specified in the manual.

## **1.4 Warranty**

- Your Mandala Astral Star includes a one-year warranty from the date of purchase.
- If you experience any issues, contact customer support immediately.
- The warranty does not cover damage due to:
  - Misuse or neglect
  - Unauthorized modifications or disassembly
  - Customs/import fees or indirect damage
- If repairs are needed due to misuse, all costs (including shipping) will be the user's responsibility.

## **1.5 Important Precautions**

- Do not use the device if it appears damaged. Contact the support.
- Ensure the correct voltage for your country before use.
- Do not disassemble or modify the device.
- Keep dry – avoid rain, high humidity, heat, and dust.

## **1.6 Maintenance**

1. Turn off the device and turn it back on; in some case the device does not response on the application control.
2. Use soft cloth or water-based glass cleaner for maintenance.
3. Keep the device clean to ensure proper performance.
4. Keep in a dry place, avoid direct sunlight.
5. Contact customer support if met with difficulties.

## **1.7 Getting started**

- Plug in the 220V AC power cord and press the red switch on the back of the device.
- Connect to your mobile phone via Bluetooth: AS-XXXX
- Select the desired treatment program via the application.
- To turn off the device, press the red switch on the back of the device

## 1.8 Advanced setting

- On the back of the device, there is a screen for setting various settings in the technical system.
- On the back of the device, there is a Volume to adjust the size of the laser symbol that is projected.
- In the application:
  - There are 23 groups of Symbols for users to choose from.
  - There is a Preset function that allows users to set or create their own Preset.
  - There is an Online Preset function that allows users to share or exchange their own Preset with others.
  - There is a scanner function that works with the Mandala Scan
  - There are 11 languages in total.

## 1.9 Product Includes

1. Mandala Astral Star
2. 220 V AC Power Cord
3. Crystal Holder
4. Universal Symbol Crystal Sphere
5. Packaging Box



## 2. Technical Data

### 2.1 Specifications

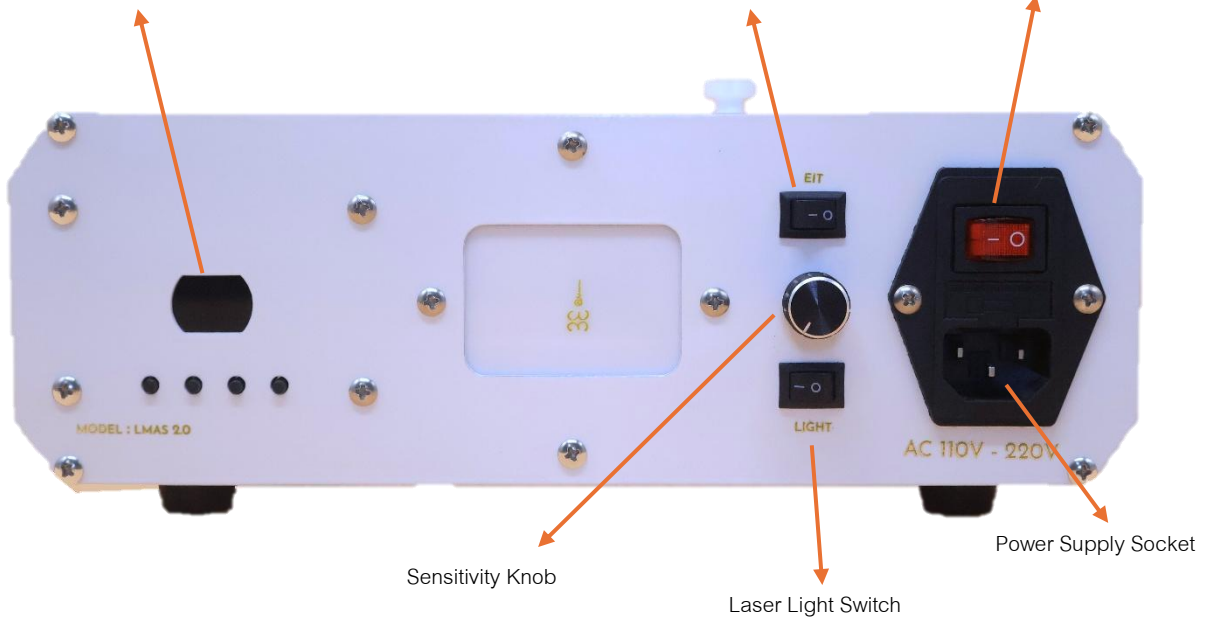
Input Voltage:	220V AC
Power:	Max. 50W
Laser Power:	Mandala Astral Star (Class 3B)
- Red:	182mW 638nm
- Green:	114mW 532nm
- Blue:	257mW 450nm
Scanning speed:	0-30kpps
Laser Color:	
- White	497mW
- Red	182mW
- Green	114mW
- Blue	257mW
- Yellow	240mW
- Magenta	382mW
- Cyan	374mW
Laser Pattern:	Unlimited Patterns from application control.
Cooling System:	Fan Cooling
Operation temperature:	Indoor (10-35°C)
Case Color:	White
Case Material:	Aluminum, Acrylic steel and ABS
Machine size:	260 x 180 x 90mm
Gross Weight:	3kg
Connection:	Bluetooth 5.0

## 2.2 Overview and Function

Display Screen: Bluetooth Connection  
Status of the device.

Energy Information Transfer  
(EIT)/ Scalar Generator Switch

On/Off button



## 2.3 Installation and Operation Instruction

1. Plug in the power cord and turn on the laser light switch to check the laser. Please be cautious with your eyes. Adjust the sensitivity knob to modify the size of the laser pattern.



- *Recommend tunes to 12 O'clock position.*
- *If the tuning is set too low, the laser becomes too concentrated, which may cause burns on the quartz sphere placed in front due to*
- *Tuning too high will cause damage to the symbol generator module.*

- The device should now be in Standby Mode, displaying default patterns. Ensure the display screen shows "AL," indicating the device is ready to pair with the app. Once the device is Bluetooth-connected and paired with the Mandala Star app, it will display "APP."



STANBY MODE



Bluetooth connected/paired with APP

- Install the support piece onto the laser output head. Place the crystal sphere into the holder. Secure both the crystal holder and harmonistic sphere, then lock the crystal holder by tightening the screw.

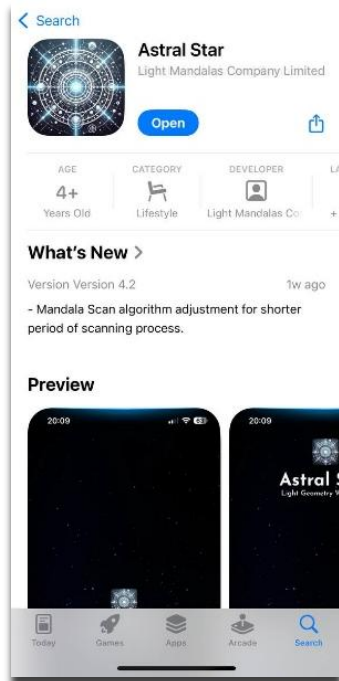


### 3. Astral Star Application

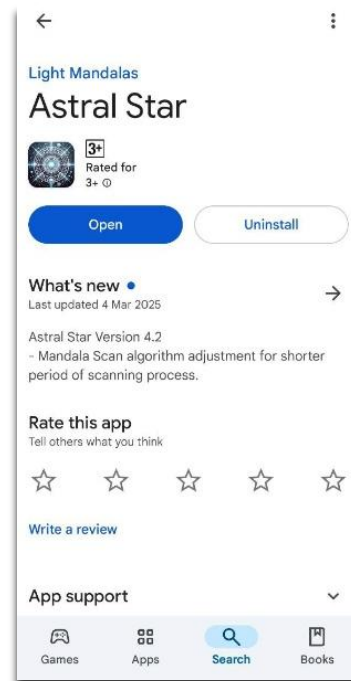
#### 3.1 Application Setup

The Astral Star app is available on iOS and Android. Download it from the App Store for iOS or Google Play Store for Android. For users in China, please download it from our website.

App Store (iOS)

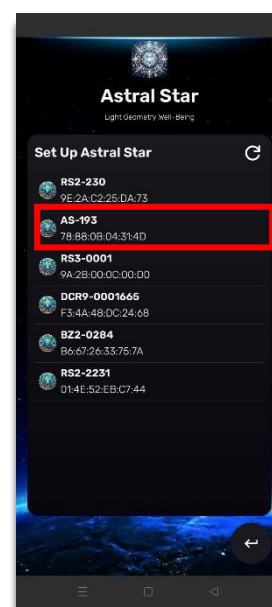
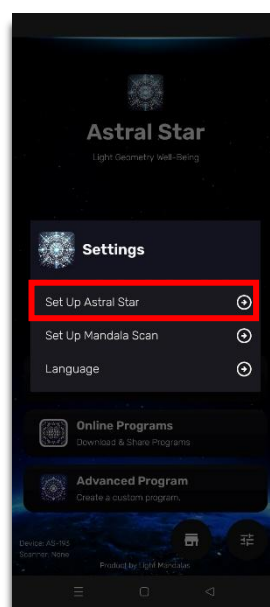
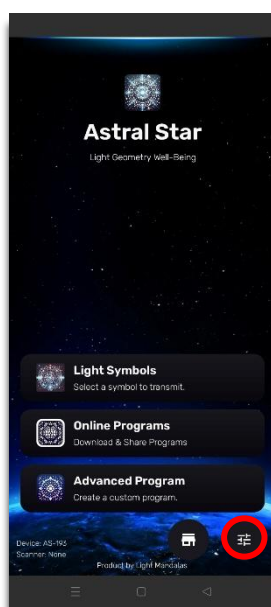


Play Store (Android)



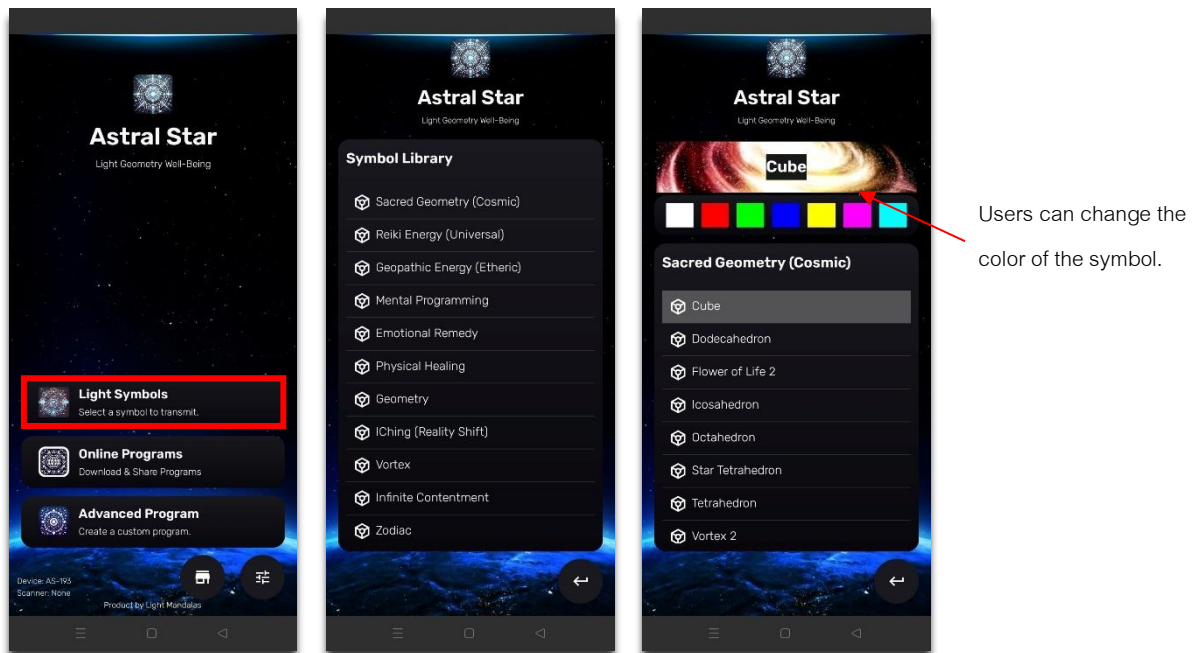
#### 3.2 Pairing Bluetooth with Application

Tap the "Settings" icon at the bottom right, then select "Set up Astral Star." The app will search for nearby devices. Choose the displayed serial number to connect via Bluetooth.



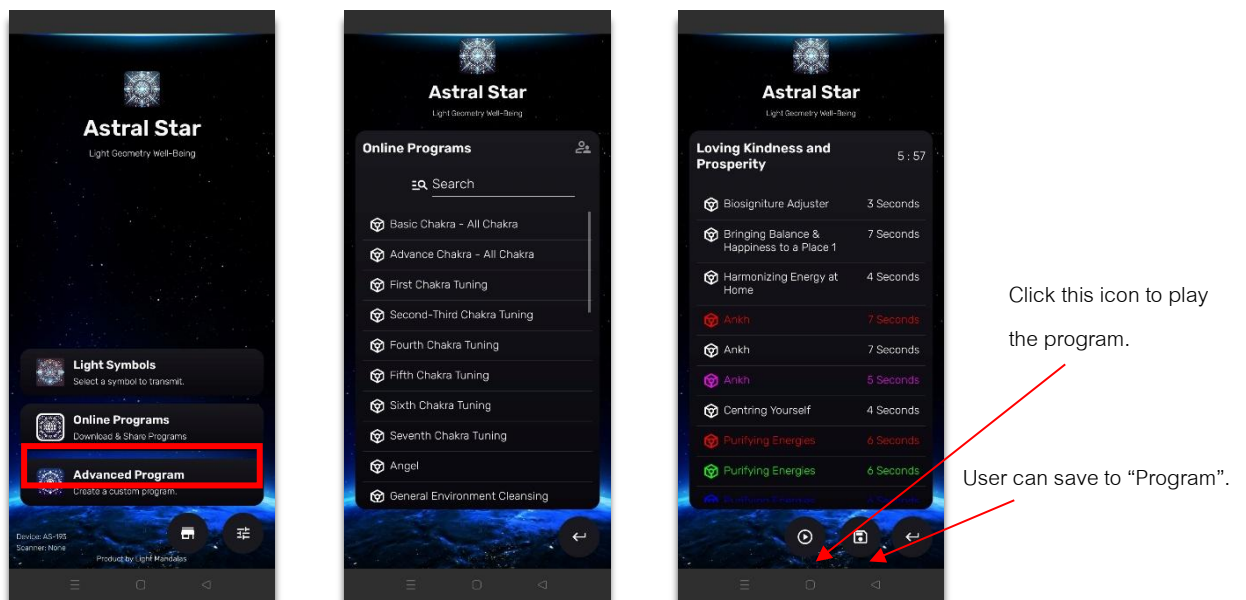
### 3.3 Light Symbols

The Light Symbol library allows you to explore various symbols representing all frequencies included in the Astral Star application. These symbols correspond to different energy patterns, helping you understand and interact with the frequencies available in the app.



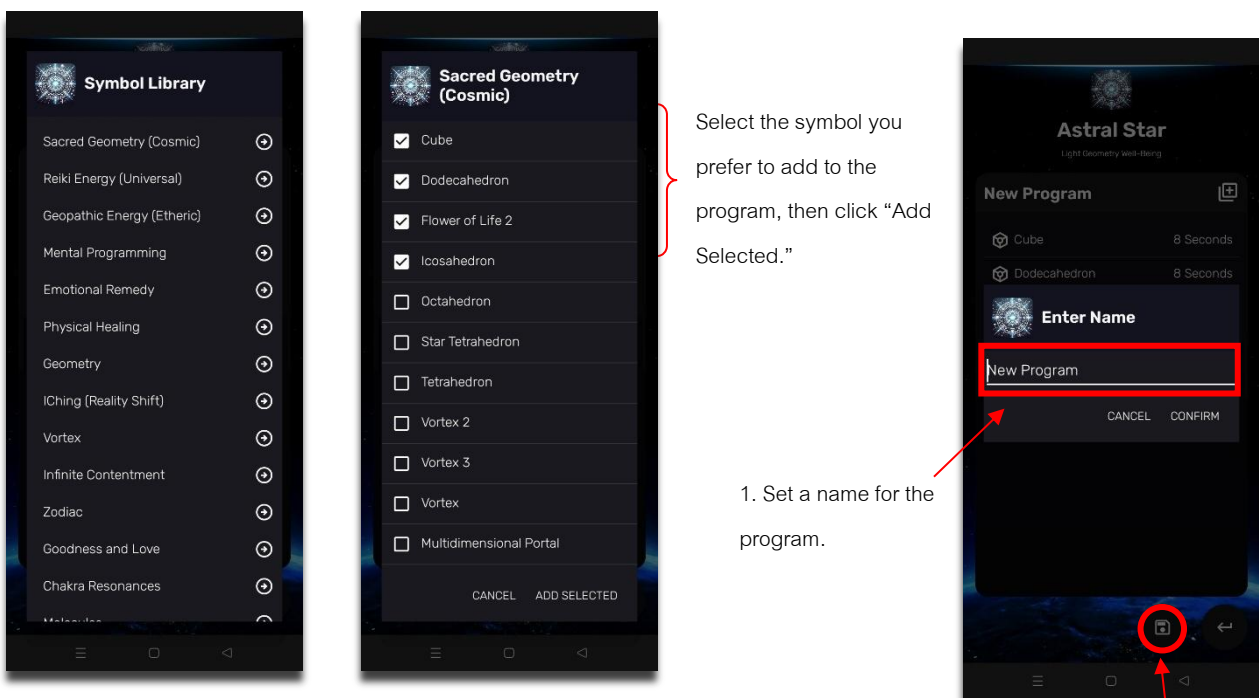
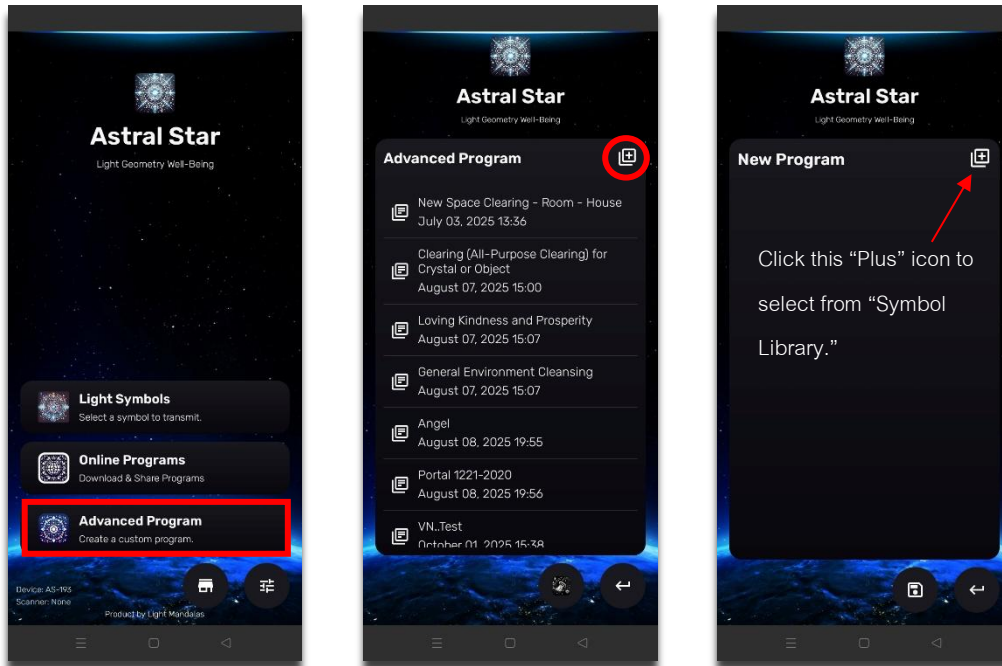
### 3.4 Online Programs

The Online Program provides a selection of healing programs from Light Mandalas, including chakra tuning and energy cleansing, designed to support well-being and balance.



### 3.5 Advanced Program

Advanced Program allows users to customize frequency settings using the library or their own frequencies. Users can combine frequencies to create a preset or custom program.

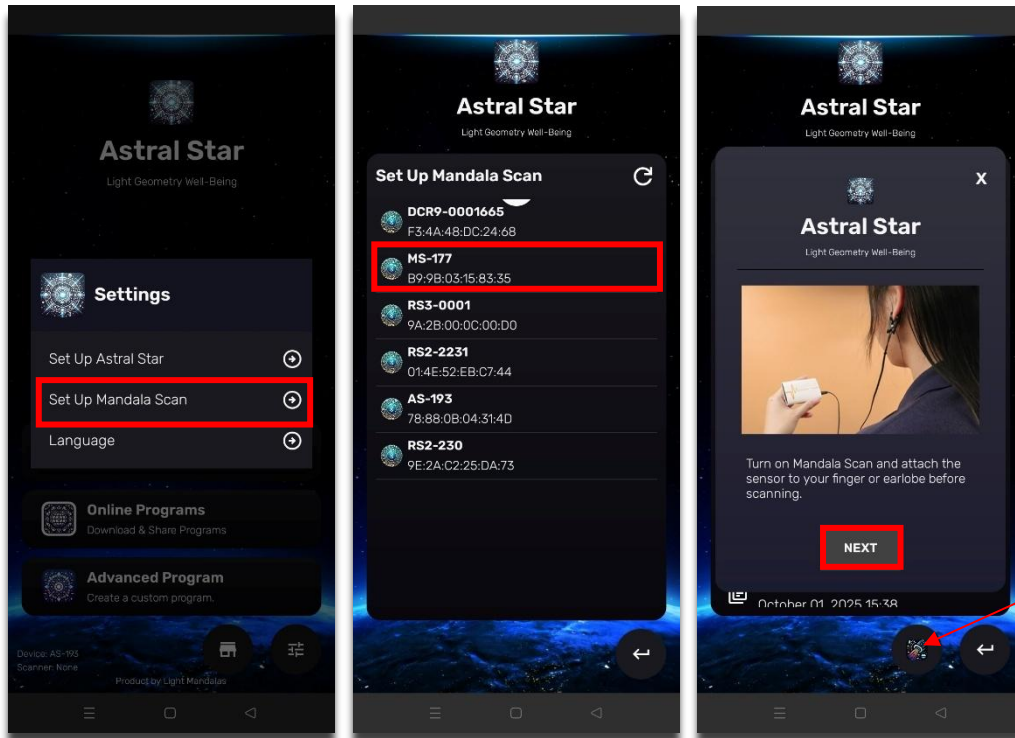


1. Set a name for the program.

2. Click this icon to save the program.

### 3.6 Mandala Scan

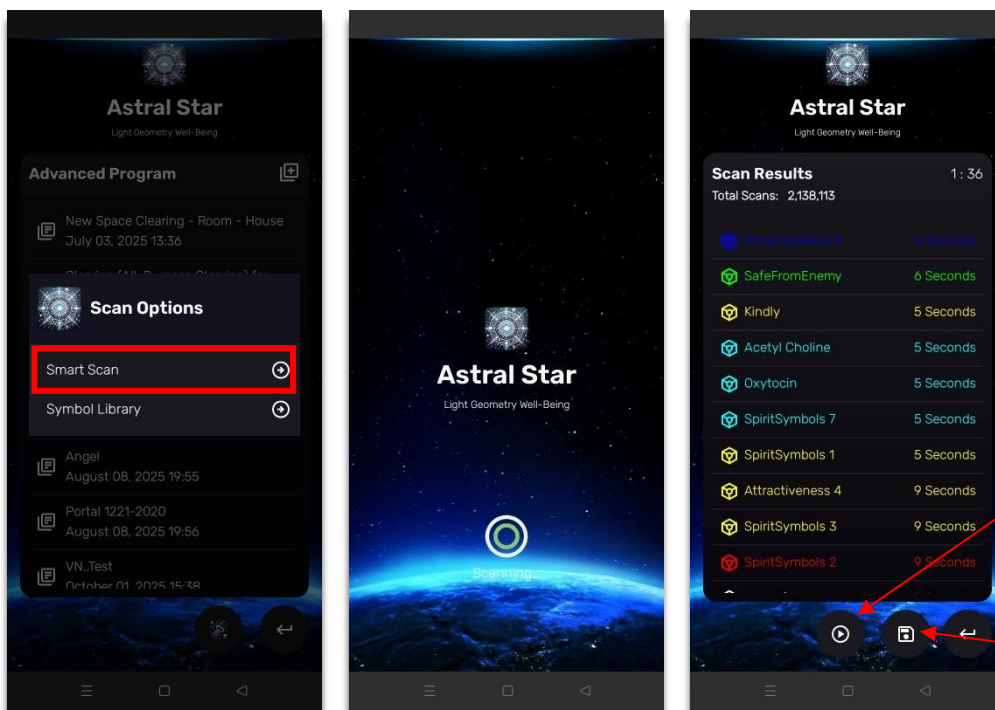
To use Mandala Scan, first pair it via Bluetooth. Tap the "Settings" icon, select "Set up Mandala Scan" and choose the displayed serial number to connect.



Choose "Advanced Program", then press the "Mandala Scan" icon after pairing Bluetooth. Lastly, press "Next."

#### 3.6.1 Smart Scan

Mandala Scan allows the users to scan their bodies for frequencies which are best for the body in that moment and play them through Astral Star.

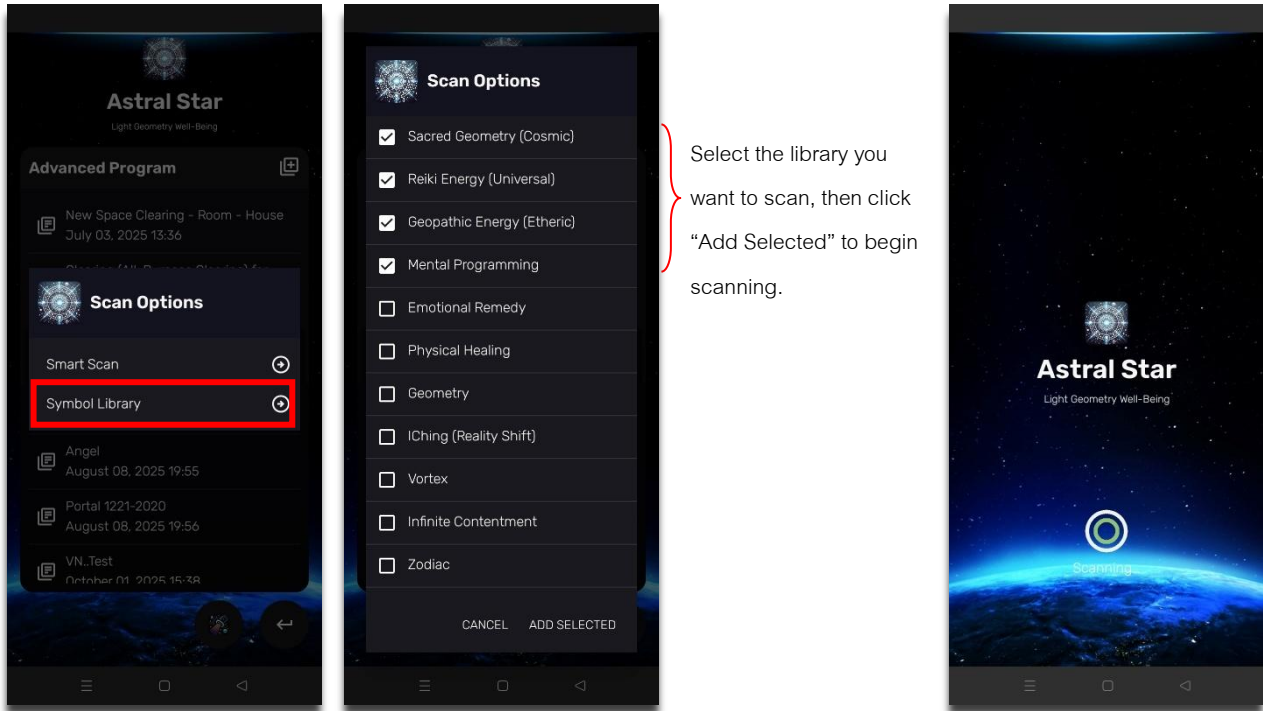


Click this icon to play all the scan through the Mandala Astral Star.

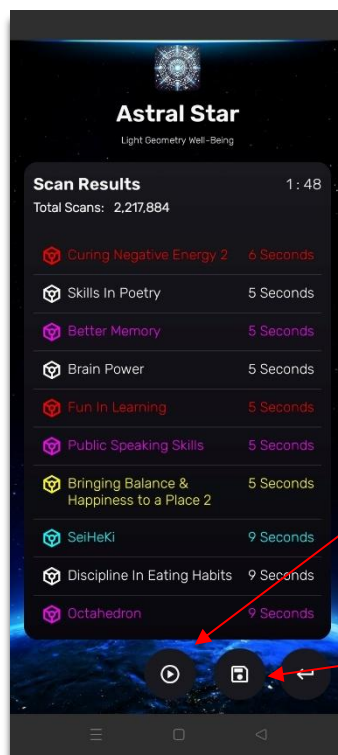
Press this icon to save the scanning results to the program list.

### 3.6.2 Select Library

Users can scan their bodies based on the categories they prefer by selecting from “Scan Options.”



Select the library you want to scan, then click “Add Selected” to begin scanning.



Click this icon to play all the scan results or the frequencies through the Mandala Astral Star.

Press this icon to save the scanning results to the program list.

## Failures Remedies

### Device Not Turning On:

- Ensure the power source matches the required voltage.
- Check if the on/off switch is fully turned on.
- Make sure the power cable is securely plugged in, all the way in.
- Inspect the fuse for any damage.

### Laser or Pattern Not Displaying:

- Confirm the Laser Light Switch is turned on.
- Adjust the Sensitivity Knob to modify the pattern size.
- Check if the device is connected to the tablet via Bluetooth. The screen should show “APP” when connected.
- Turn it off and turn it back on to reset Bluetooth connection.

## Disclaimer

Light Mandalas products are designed as energy support tools for relaxation, stress management, and well-being. They are not medical devices and do not replace professional medical treatment or advice.

Any experiences or testimonials shared regarding the use of our products reflect individual responses and are not guaranteed outcomes. Since personal energy and emotional states vary, users may experience different effects, including heightened sensitivity or discomfort. By using our products, you acknowledge that all outcomes are your sole responsibility.

Light Mandalas Co., Ltd. (Thailand) is not liable for any unintended effects, discomfort, or injuries that may arise from product use. If you have any medical concerns, please consult a healthcare professional before using our products.

*For any questions, please reach out to us for further support.*

Light Mandalas Co., Ltd. (Thailand Headquarters):

- Light Mandalas Website: [www.light-mandalas.com](http://www.light-mandalas.com)
- Email: [info@light-mandalas.com](mailto:info@light-mandalas.com)
- Instagram: [@mandalawave9](https://www.instagram.com/mandalawave9)
- YouTube Channel: Light Mandalas Official
- TikTok: Light Mandalas
- WeChat: Light Mandalas 光之曼陀罗
- Technical Support Email: [cservice@light-mandalas.com](mailto:cservice@light-mandalas.com)